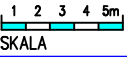
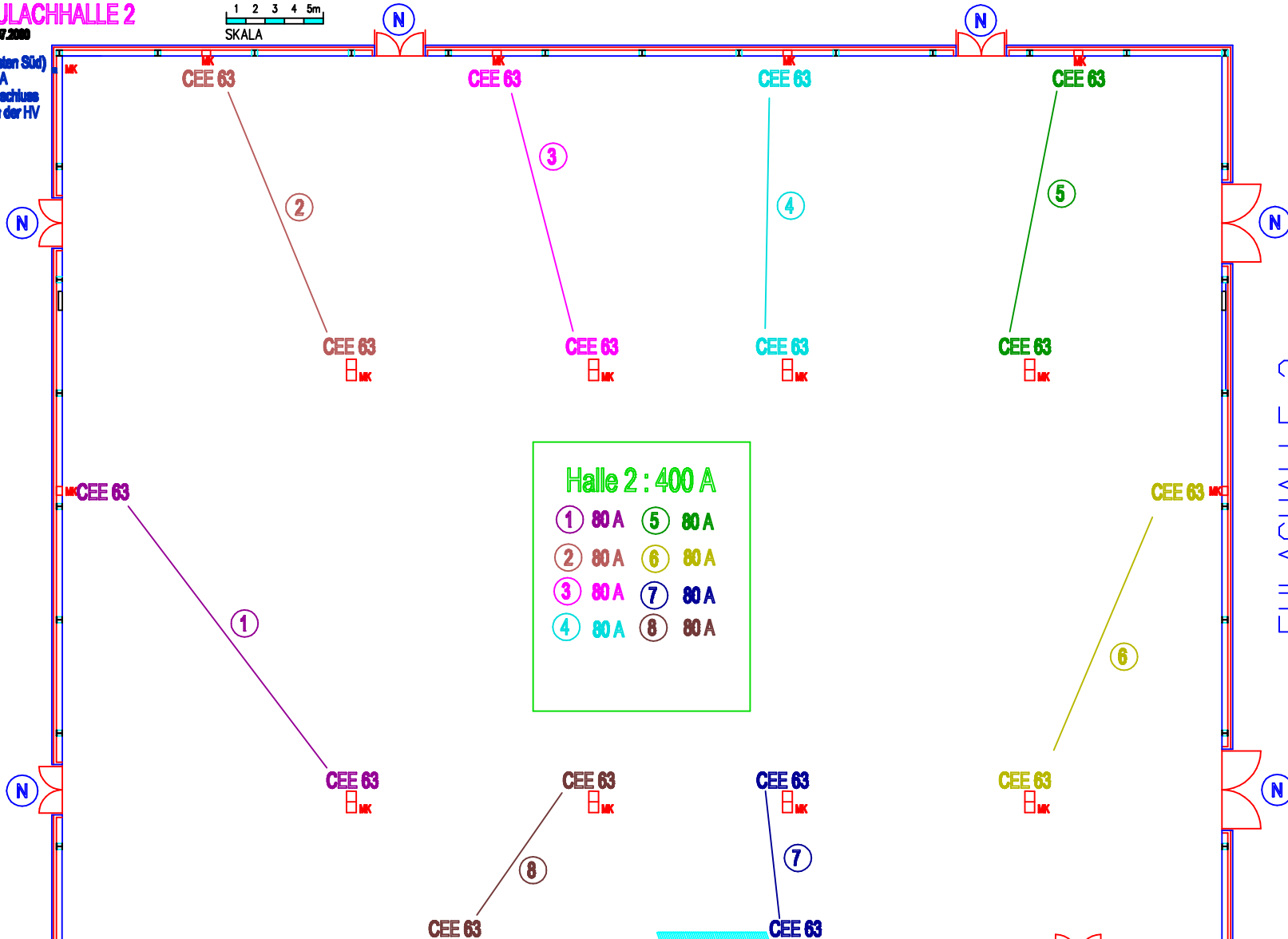


**EULACHHALLE 2**

17.07.2000



(Ausserkasten S0d)  
400 A  
Direkt-Anschlus  
Schalter in der HV



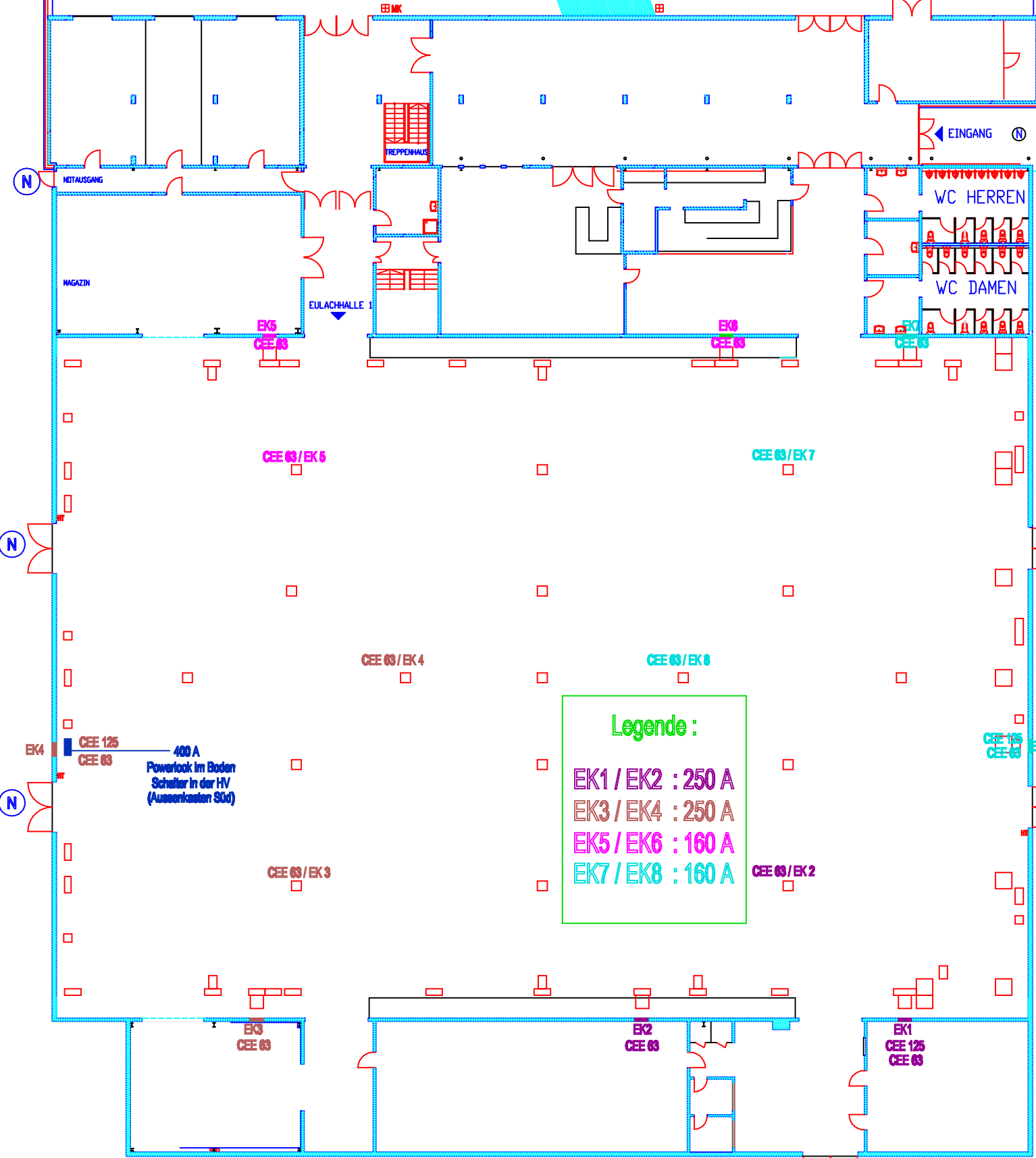
**Halle 2 : 400 A**

① 80 A	⑤ 80 A
② 80 A	⑥ 80 A
③ 80 A	⑦ 80 A
④ 80 A	⑧ 80 A

EULACHHALLE 2

EINGANG

EULACHHALLE 1



**Legende :**

EK1 / EK2 : 250 A  
 EK3 / EK4 : 250 A  
 EK5 / EK6 : 160 A  
 EK7 / EK8 : 160 A

**EULACHHALLE 1**

17.07.2000



Masstab 1 : 200

Unter Vordach  
2 x CEE 63